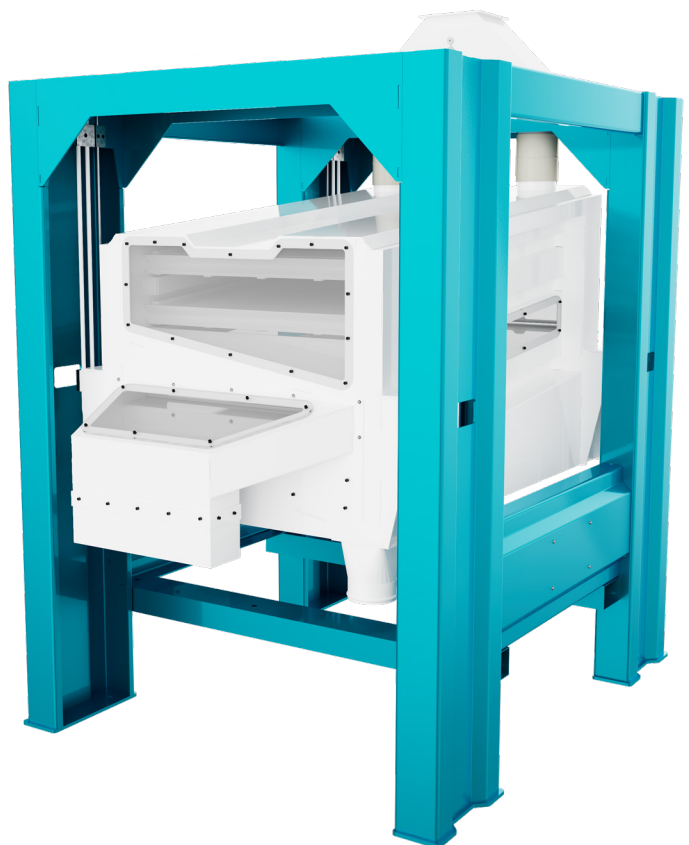


CLR 107 CLEANER

Fine grain cleaner

The new CLR 107 Cleaner is the ideal machine for fine cleaning medium capacities maize, wheat and other grains. It is locally produced by Roff, removing the need to import and making it a cost-effective alternative with fast lead times. The screening section includes three screens.



MACHINES THAT DRIVE PERFORMANCE

Capacity and Specifications

Performance, fine cleaning maize:	6 tons/hour
Motors @ 1.55kw 380v:	1
Screens:	3
Weight:	± 750kg
Shipping Dimensions (mm):	1700(L) X 1400(W) X 2105(H)

Highlights

- > Locally produced - cost effective and short lead time
- > Dust free
- > Screens are self-cleaning
- > Quickly swap screens
- > Oscillation results in low vibration
- > Easily interchangeable screens for cleaning different grain products
- > Easy installation and minimum maintenance required

